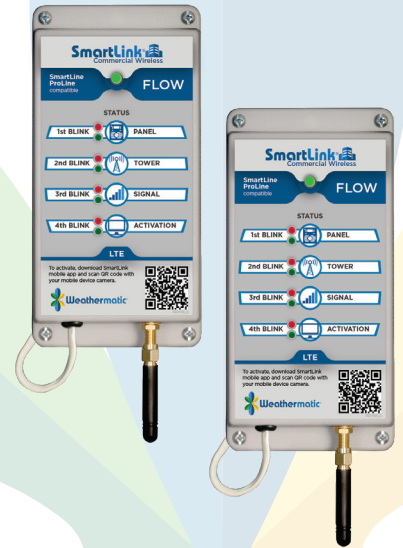




The Smart Irrigation Controller

IT'S TIME TO SAVE WATER, MONEY AND BEAUTIFY YOUR LANDSCAPE WITH THE SMARTLINK NETWORK

Imagine having immediate access to every element of your irrigation system from inspections, to repairs and water usage. With the SmartLink Cloud-based Landscape Network, you and your landscape professional will have unprecedented control and visibility over your entire system.



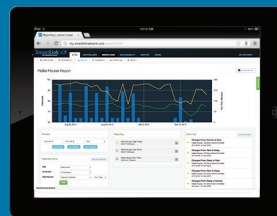
Why upgrade to SmartLink?

Now your landscape professionals are capable of making a simple programming change, monitoring the health of the system, or even being alerted if a problem occurs. They can instantly shut down your system in an emergency and help you comply immediately with local watering restrictions, avoiding costly fines.

Gain access to the SmartLink Network via any device that connects to the Internet. Adjusting all of your controller's parameters is surprisingly easy. And with real-time reporting, you get visibility showing exactly how much water you are saving.



COMPUTER



TABLET



SMARTPHONE

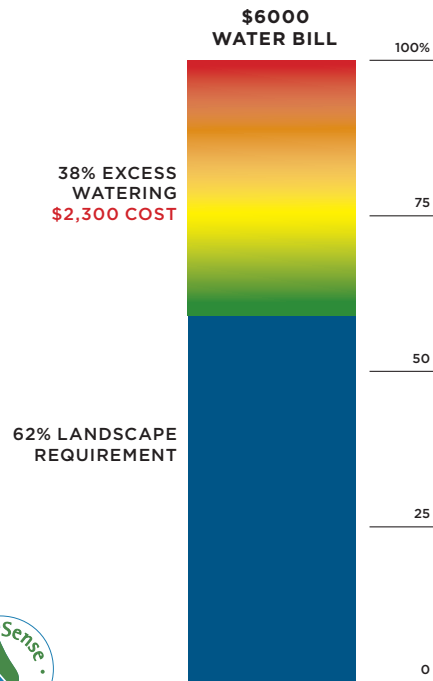
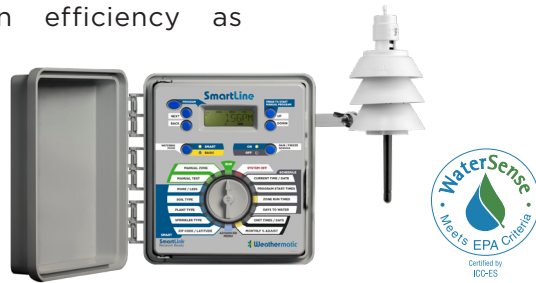


Our mission is to deliver clean drinking water to thousands of families in need, and to inspire our partners to put water first in irrigation, design, installation, and maintenance.

A smarter way to save

Conventional timer-based systems water on weekly schedules that once programmed, are rarely changed. Because of this, they tend to over-water by 20-60%. They also do not take into account seasonal, soil, plant and weather conditions. Over-watering injures plants and creates runoff that can lead to costly damage to pavement and walkways. Not to mention, it's embarrassing.

The Smartline controller is the water saving control system in SmartLink, with over 500,000 units in operation across 85 countries. Studies have shown an average water savings of 38% by taking into account all the necessary conditions to maximize irrigation efficiency as recognized by the U.S. EPA WaterSense designation.



Here's what SmartLink can do for you

Dramatic Water Savings

Saves an average of 38% on water with auto adjust features which precisely irrigate to the needs of the landscape

Landscape Beautification

Weather-sensitive irrigation avoids over-watering or under-watering to extend plant life

Real-Time Reporting

Inspection, repair and water usage reports provide visibility into your irrigation system and help you regularly see the benefits of Smart weather-based irrigation.

Remote Control

Global off controls allow you to easily shut down your entire irrigation system with the click of a button - anytime, anywhere.

Freeze Prevention

Automatically prevents watering during freezes

Reduce Hardscape Damage

Avoid costly damage to pavements and parking lots from water run-off

Immediate Compliance

Web-based programming for quick compliance with water restrictions to avoid costly fines

Web-Based Control

Enable your contractor to instantly shutdown your system in an emergency

Equipment Assurance

Equipment warranty to cover lightning, theft, and physical damage

Flow Sensing

When the SmartLink Flow Sensor is installed, it will provide critical information used to take water management to a new level



NOW YOU HAVE CONTROL OF YOUR CONTROLLER

The most important part of an irrigation system is the controller. Like the dashboard of a car, you need to have critical information provided to you in order to drive. Sadly, conventional controllers do not have the technology to give you the feedback and control needed to run your system efficiently. There's nothing conventional about SmartLink. Go Smart. Go SmartLink.

Conventional Sprinkler Timer

Low efficiency = over watering to limit landscape loss due to weather changes

No remote access for urgent programming changes

No remote monitoring or reporting

Limited and commonly expired equipment warranty only covers manufacturer defects

Loses time, programming, and landscape

Non-compliant with watering day restrictions = Frequent repair trips or costly fines. Non-compliant and Illegal to install in many areas

SmartLink®

Wireless Landscape Network

High efficiency = Automatically adjusted watering times based on the weather to save 20-60%

Remote access for rain/freeze events, allows shutdown and instant off capability to limit liabilities

Alert monitoring and reporting of water savings

Lifetime of service equipment warranty includes coverage for lightning, theft, and physical damage

Retains time, date and program. No battery is required for water restriction compliance

Complies with watering day restrictions and special event programming, using web-based control. Increasingly required in new building codes

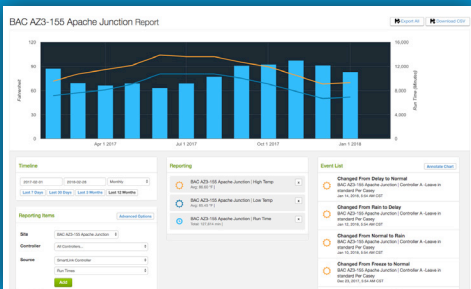
The SmartLink Network includes the SmartLine controller, SmartLink aircard, on-site weather station, SmartLink web and mobile software combined - there's nothing else like it!



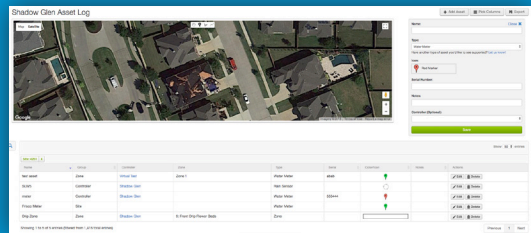
Gain Control, Visibility and Accountability On One Of Your Most Important Assets... Your Landscape and Irrigation System.

The SmartLink user interface is designed to make activating and programming your irrigation controllers incredibly simple. Appreciate the ease of use that saves time on programming and helps respond to customer requests or weather related events. Manage hundreds of sites, send global commands and store programs to save significant time and expense.

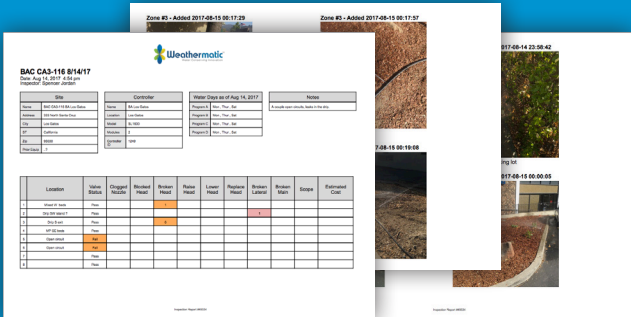
WEB USER EXPERIENCE



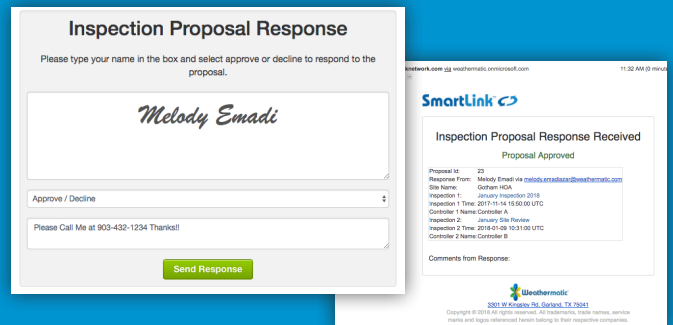
Historical reporting features on water usage by controller, by zone and by date range.



Identify and map where all important irrigation assets are located on your property.



Powerful inspection reports include date, time and photographic evidence.



Standardized, documented approval process for all irrigation repairs

weathermatic.com
 Support: 888.484.3776
 support@weathermatic.com



1,000 gallons given per bundle

Our mission is to deliver clean drinking water to thousands of families in need, and to inspire our partners to put water first in irrigation, design, installation, and maintenance.

Copyright 2020 Weathermatic. All Rights Reserved AD3001_revF

